

# Icom 7100 tips

June 29, 2021

## Packet

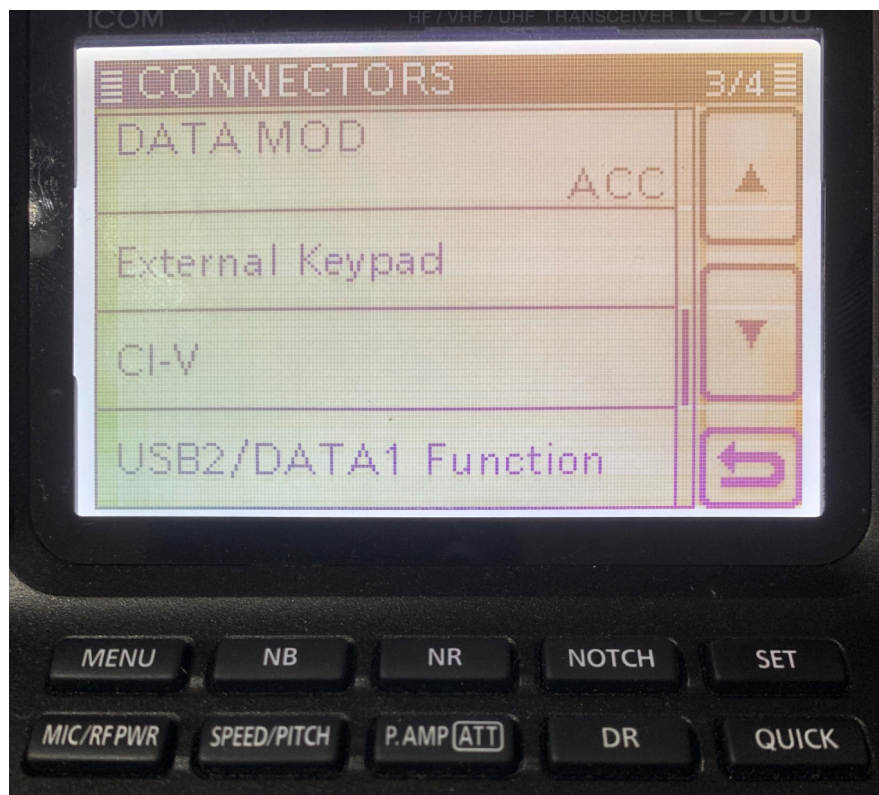
Basic Winlink session setup for IC-7100:

1. Radio settings
2. WinLink Express settings

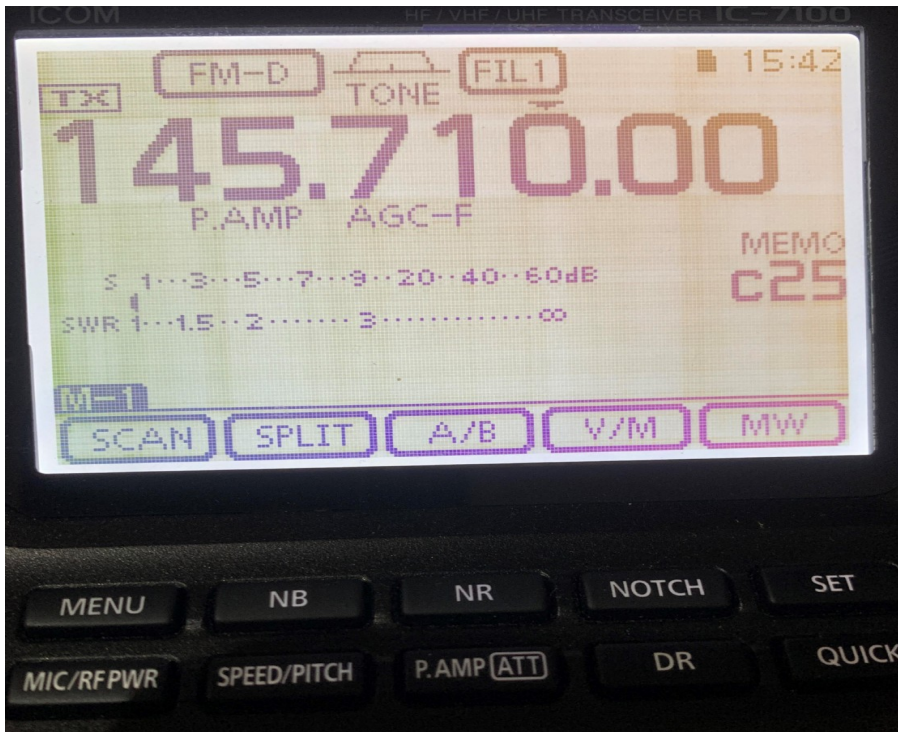
## Radio Settings

1. Set DATA MOD to **ACC**
2. Frequency (packet) and mode (**FM-D**)
3. VSEND Select to **OFF**

Use the SET/CONNECTIONS Menu.

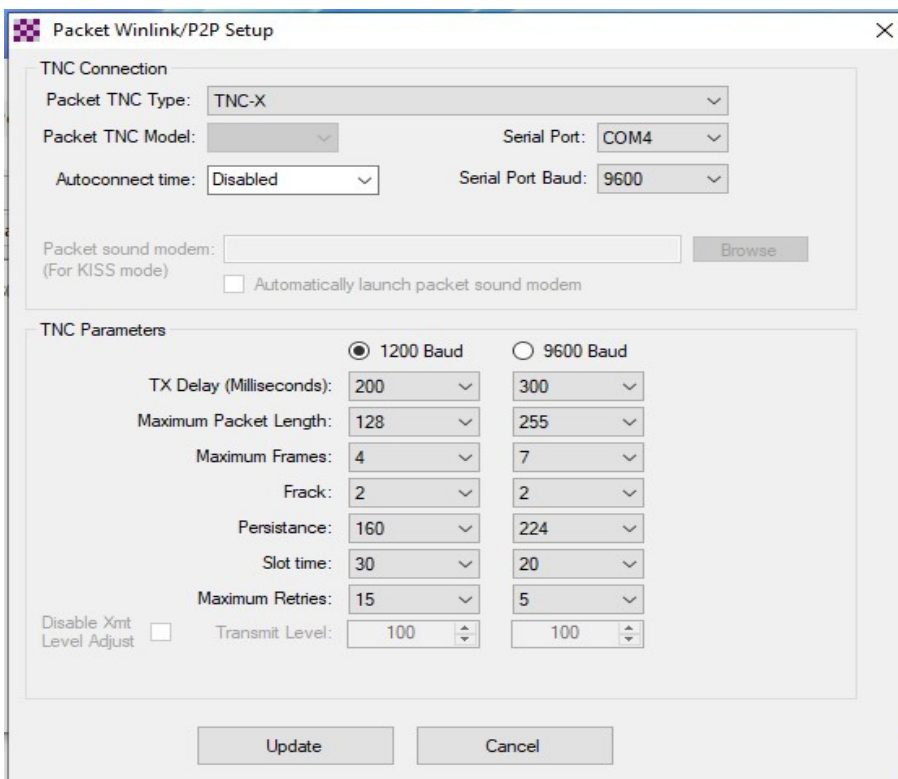


Choose packet gateway under Channel Selection and then set radio to gateway frequency. (i.e. 145.710)



## Winlink Settings Menu

Choose **TNC type**, **Serial Port** and **Port Baud rate**



# Vara

Set DATA MOD to **USB**



Set Mode to **USB-D**





## Voice

Be sure to set DATA MOD to **MIC**

