

## **GAARES-P2P Peer-to-Peer Winlink Net *Detailed* Instructions**

### **BACKGROUND:**

GAARES Winlink Net is initiating a trial program that allows check-ins via Winlink Vara HF P2P (Peer-to-Peer). During the test period of 3 weeks, check-in via P2P will be separate from the RMS/Telnet check-ins each Sunday. You are encouraged to check into both the P2P Net and via RMS/Telnet to the regular Net. GAARES will kick off this test of P2P check-ins on Sunday, June 2, 2024.

### **WHY P2P:**

Peer-to-peer (P2P) is a proven mode built into Winlink Express. P2P enables stations to pass traffic when internet (INET) has failed. The entire Winlink RMS system requires INET. With a wide area failure of INET, P2P is the only way to get messages through with Winlink. GAARES wants to exercise this capability so members will know how to do it if/when the situation requires it.

### **P2P BASICS:**

Understand the basics of Peer-to-Peer. When using RMS, you send a message to an RMS station and that station then relays the message to the internet for delivery. With P2P, a station sends the message directly to another P2P station, in our case, an NCS. The message goes straight to the NCS without the use of the internet.

For this initial test period, we will not use a Winlink Check-In form for P2P check-in. A simplified, short standard Peer-to-Peer message will be used with no form attached.

### **OPERATIONAL DIFFERENCES BETWEEN RMS AND P2P:**

These are the only significant differences between RMS and P2P:

- The message needs to be posted to the “Outbox” as a P2P message, not a “Winlink Message”
- The message is sent to a P2P Target Station instead of an RMS Station
- The sender uses a “Vara HF P2P session (not a “Vara HF Winlink” session) to call the Target Station
- The sender connects to the Target Station (NCS) via P2P and sends the P2P message

In summary, Vara HF P2P is similar to using an RMS station, except you use a Vara P2P Session and you make sure the message is a P2P message. Just like RMS stations, a P2P station may use 500 Hz or 2300 Hz bandwidth. GAARES-P2P NCS will be configured to accept traffic at either bandwidth.

### **COVERAGE AND WINDOWS:**

Our objective is to cover the entire state by having three windows and using 80m or 40m. GAARES-P2P NCS ND1J will be the Target Station. Members will connect to NCS ND1J and send a P2P check-in message that is addressed to the tactical address GAARES-P2P. After the test period, we may adjust the times, based on activity and feedback.

## CHECK IN WINDOWS FOR JUNE 2<sup>nd</sup>, JUNE 9<sup>th</sup>, & JUNE 16<sup>th</sup>, 2024:

0700- 1000 ET on 80m, CENTER FREQ 3584.5 kHz (DIAL FREQ 3583 kHz USB)

1000- 1400 ET on 40m, CENTER FREQ 7080 kHz (DIAL 7078.5 kHz USB)

1400- 1630 ET on 80m, CENTER FREQ 3584.5 kHz (DIAL FREQ 3583 kHz USB)

## INSTRUCTIONS FOR CHECK IN VIA P2P:

### PREPARE A P2P STANDARD MESSAGE IN WINLINK EXPRESS

- Draft a new message in Winlink Express. Address it only to "GAARES-P2P" (no quotes).
- Subject Line: <your callsign>, <first name>, <county>, P2P
- Example Subject Line: AB4QQ, Russell, Gwinnett, P2P
- Body of Message:
  - Line 1: <town, state>, <LAT>, <LON> (LAT/LON optional and in any format)
  - Line 2 (Optional): such as portable, AUX power, rig, antenna, suggestions
- Body example Line 1: Buford, GA, 33.1002N, 84.2060W  
Line 2: (all optional) Aux power avail, IC7100, OCF
- Before posting, at top of message, change "Send As" box to "Peer-to-Peer Message"
- Post to Outbox
- In Outbox, check message shows addressed to GAARES-P2P (P2P)
  - If you do not see (P2P), change "Send As" type to "Peer-to-Peer Message", Post and verify

### SEND MESSAGE:

- Open a Vara HF P2P Session (not a Vara HF Winlink Session)
- In the Vara P2P Session Window, enter the NCS callsign and Center Freq, just as you do for RMS
- Use the callsign ND1J. (This is the NCS Target Station you will connect to.)
- Click Start to initiate the connect
- Your station will connect to ND1J and your message will be sent
- If desired, keep the session open for a few minutes afterwards. NCS will try to connect back to you with acknowledgment or help/assistance information. Note: NCS may be away from rig at times
- Troubleshoot: No connect- check your session type "Vara HF P2P" and that you are calling ND1J
- Troubleshoot: Connect but no message sent- verify Outbox message is to GAARES-P2P (P2P). The (P2P) must be after the address. If it is not, change the message type to P2P and reconnect.

**Note-1:** In P2P, a message will be sent only if addressed to the callsign you connect to < or > to a tactical callsign that is active at that station's location. You must connect to ND1J.

**Note-2:** If you address your message to ND1J, it will be sent. However, GAARES will only accept check-ins addressed to GAARES-P2P. To reiterate, if you address the check-in message to ND1J, it will be delivered but it will not be accepted.

**Note-3:** P2P messages cannot be sent to email addresses, nor can you add a CC: line. They can only be addressed to one callsign or to a tactical callsign.

**Note-4:** Do **NOT** click on the "Request message receipt". GAARES-P2P will acknowledge the receipt of all check-ins via a regular Winlink Message, just as we do for the main Winlink Net.

## GAARES-P2P Peer-to-Peer Winlink Net *Quick* Instructions

**Address Message To** (Tactical Address): GAARES-P2P

**When:** Sunday June 2nd, June 9th and June 16th, 2024

**Winlink Session Type:** Vara HF P2P

### **Schedule (for each of the three Sundays)**

Time (ET)	Band (m)	Center Frequency (kHz) USB	Dial Frequency (kHz) USB
0700 - 1000	80	3584.5	3583.0
1000 - 1400	40	7080.0	7078.5
1400 - 1630	80	3584.5	3583.0

### **Message Type for P2P Check-In:**

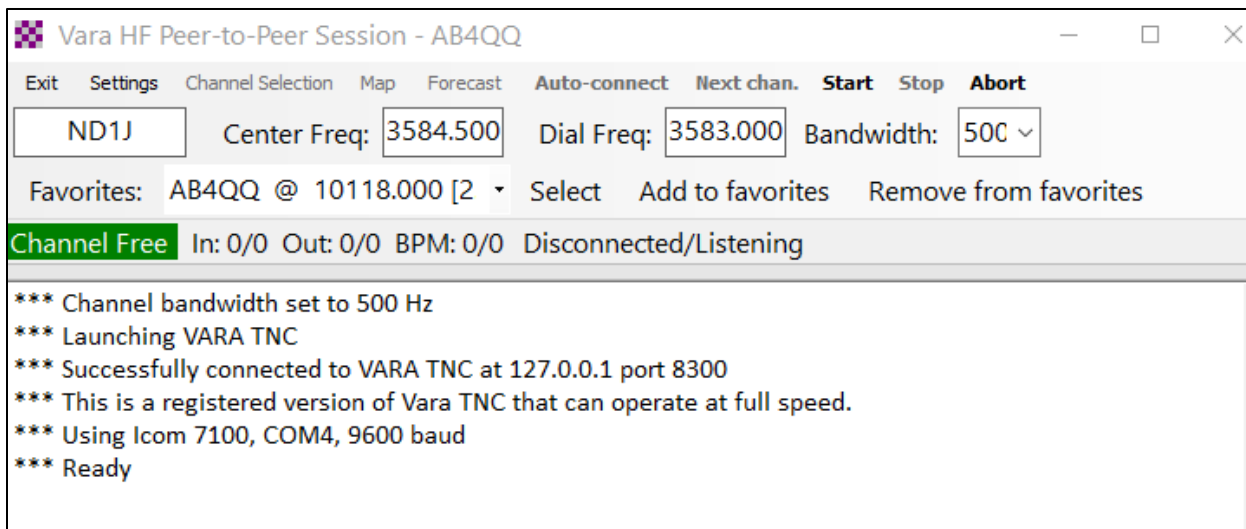
Use the standard Winlink P2P message for checking into this net. Refer to detailed instructions, "PREPARE A P2P STANDARD MESSAGE IN WINLINK EXPRESS". **Do not use any Winlink template forms.**

The screenshot shows a window titled "Edit a draft message entered by AB4QQ". The window has a menu bar with "Post to Outbox", "Select Template", "Attachments", "Spell Check", "Save in Drafts", and "Close". Below the menu bar, there are fields for "From:" (AB4QQ), "Send as:" (Peer-to-Peer Message), a checkbox for "Request message receipt", and a "Set Defaults" button. The "To:" field contains "GAARES-P2P;". The "Cc:" field is empty. The "Subject:" field contains "AB4QQ, Russell, Gwinnett, P2P". The "Attach:" field is empty. At the bottom of the window, there is a text area containing "Buford, GA 33.1002N, 84.2060W" and "Aux power avail, IC7100, OCF".

**Completed Standard Winlink Peer-to-Peer Message Example for AB4QQ**

### **Send Message:**

Use Vara HF P2P to send your prepared message. The session NCS is David ND1J for all sessions. Messages may be sent using 500 or 2300 Hz bandwidths. You connect to ND1J and send the message addressed to GAARES-P2P. Refer to detailed instructions, "SEND MESSAGE".



80m Winlink Peer-to-Peer Session Example