

GAARES-P2P Peer-to-Peer Winlink Net Instructions for Trials 4 and 5

Address Message To (Tactical Address): GAARES-P2P

When: Sunday July 14th, July 21st, 2024

Winlink Session Type: Vara HF P2P

Session NCS (Both Sessions): AB4QQ Russell

Schedule (for each of the two Sundays)

Time (ET)	Band (m)	Center Frequency (kHz) USB*	Dial Frequency (kHz) USB*	Mandatory Band Width
0600 - 1000	80	3584.5	3583.0	500 Hz
1000 - 1400	40	7083.5	7082.0	500 Hz

*Frequency may change in future trials.

Message Type for P2P Check-In:

Use the following Winlink P2P message for checking into this net. **Do not use any Winlink template forms.**

The screenshot shows a 'Enter a new message' window with the following fields and content:

- From:** ND1J
- Send as:** Peerto-Peer Message
- To:** GAARES-P2P;
- Cc:**
- Subject:** ND1J, David, Coweta, P2P, 80m
- Attach:**

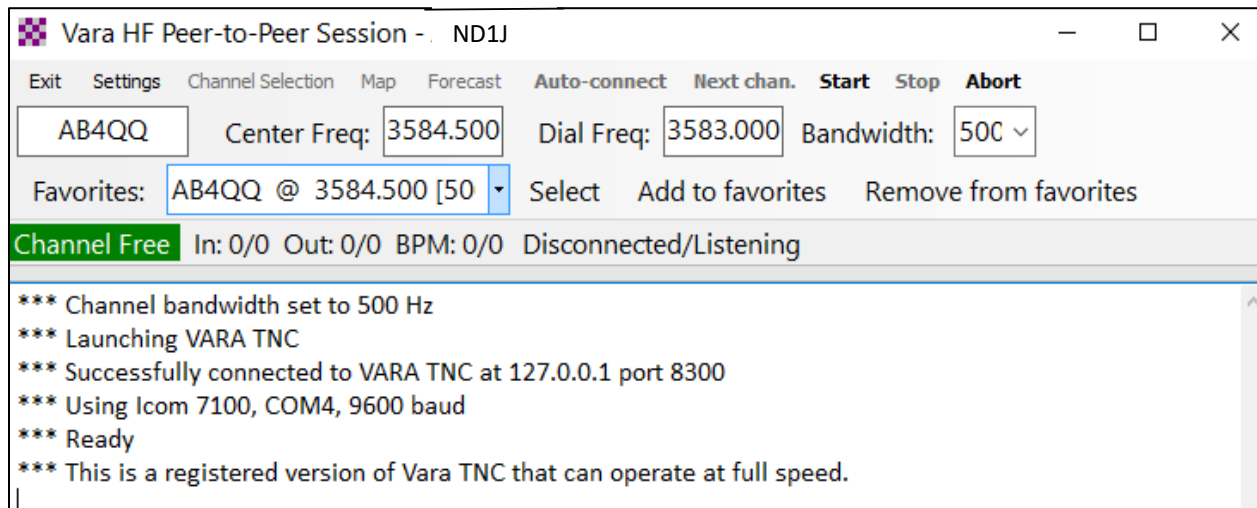
Below the fields, the text reads: 'Senolia, GA, IC7100, OCF, 60W 10, 12, 15, 20, 30, 40, 80m'. A red arrow points to the list of bands with the text 'Include band capability of your station'.

Completed Standard Winlink Peer-to-Peer Message Example for ND1J

Send Message:

Use Vara HF P2P to send your prepared message. The session NCS is Russell AB4QQ for both sessions. Messages must be sent using the 500 Hz bandwidth. **You connect to AB4QQ and send the message addressed to GAARES-P2P.**

GAARES-P2P Peer-to-Peer Winlink Net Instructions for Trials 4 and 5



80m Winlink Peer-to-Peer Session Example

A REMINDER FOR CALLING A STATION WHO ACCEPTS 500 HZ CONNECT REQUESTS ONLY:

- Open Winlink Express, turn on rig, then open a Vara HF Peer-to-Peer Session
- In the top area, where you enter the callsign and frequency for the desired station, select a bandwidth of 500 with the dropdown arrow
- After doing so, note the message on the screen: *** Channel bandwidth set to 500 Hz
- Also, check the Vara HF TNC window (below the waterfall) now shows 500 in a small box
- Also, the red vertical lines in the waterfall are now close to each other, only 500 hz wide.
- You are now ready to initiate a connect at 500 Hz.
- After you are done with 500-Hz ops, change the dropdown bandwidth back to 2300
- Best Practice: Get in the habit of always checking the modem's bandwidth before starting a connection request to make sure it is what you desire.